



# Is medicinal cannabis suitable for me?

Medicinal cannabis may be suitable for some health conditions, where all other treatments have been unsuccessful. These include:

- ▶ chronic non-cancer pain
- ▶ epilepsy
- ▶ nausea and vomiting due to chemotherapy
- ▶ palliative (end-of-life) care
- ▶ multiple sclerosis

Your safety is important. By following these **5 steps**, you and your doctor can work together to reach the best decision for your health.

## 1. Discuss the options with your doctor

Your doctor will conduct a thorough assessment, including a full medical and mental health history. They will make a list of all other treatments you have tried without success. They may choose to consult with other medical practitioners or refer you to another doctor to discuss a possible prescription.



## 2. Get your doctor's recommendation

Your doctor will research the use of medicinal cannabis in other people with your condition. Doctors must make a decision based on the evidence, and on the benefits and risks to you. If medicinal cannabis is suitable for you, the doctor will need to apply for approval, which could take several days.



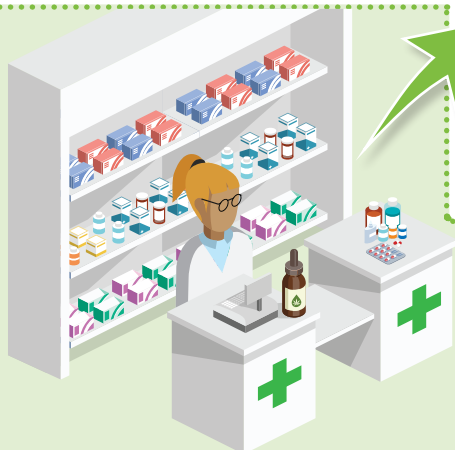
## 5. Set a review date

It is important to check in with your doctor or pharmacist to discuss whether medicinal cannabis is working for you, and if you are experiencing any side effects. Talk to your doctor about making regular review appointments.



## 4. Access medicinal cannabis

If approved, the doctor will write a prescription. They may need to nominate a pharmacy where you can have your prescription filled. Accessing medicinal cannabis without a prescription is illegal.



## 3. Consider the costs

Medicinal cannabis products vary in price and costs will depend on how you access the products eg, from a pharmacy, through a government program, or as part of a clinical trial. If the doctor is going to prescribe medicinal cannabis for your condition, check what the costs will be.



[nps.org.au/medicinal-cannabis](https://nps.org.au/medicinal-cannabis)

© 2020 NPS MedicineWise. Published May 2020. ABN 61 082 034 393 Level 7/418A Elizabeth St, Surry Hills NSW 2010. Independent. Not-for-profit. Evidence based. Developed with funding from the Australian Government Department of Health. The information provided is not medical advice. Do not use it to treat or diagnose your own or another person's medical condition and never ignore medical advice or delay seeking it because of something herein. Medicines information changes, and may not be accurate when you access it. To the fullest extent permitted by law, NPS MedicineWise disclaims all liability (including without limitation for negligence) for any loss, damage, or injury resulting from reliance on, or use of this information. NPS2165.