

LUMIGAN® PF EYE DROPS

(bimatoprost 300 microgram per mL)

Consumer Medicine Information

What is in this leaflet

This leaflet answers some common questions about LUMIGAN® PF eye drops. It does not contain all the available information. It does not take the place of talking to your doctor or pharmacist.

All medicines have risks and benefits. Your doctor has weighed the risks of you using LUMIGAN® PF eye drops against the benefits they expect it will have for you.

If you have any concerns about using this medicine, ask your doctor or pharmacist.

Keep this leaflet with the medicine. You may need to read it again.

What LUMIGAN® PF eye drops are used for

LUMIGAN® PF eye drops are used to lower raised pressure in the eye and to treat glaucoma.

Glaucoma is a condition in which the pressure of fluid in the eye may be high. However, some people with glaucoma may have normal eye pressure. Glaucoma is usually caused by a build up of the fluid which flows through the eye. This build up occurs because the fluid drains out of your eye more slowly than it is being pumped in. Since new fluid continues to enter the eye, joining the fluid already there, the pressure continues to rise. This raised pressure may damage the back of the eye resulting in gradual loss of sight. Damage can progress so slowly that the person is not aware of this gradual loss of sight.

Sometimes even normal eye pressure is associated with damage to the back of the eye.

There are usually no symptoms of glaucoma. The only way of knowing that you have glaucoma is to have your eye pressure, optic nerve and visual field checked by an eye specialist or optometrist. If glaucoma is not treated it can lead to serious problems, including total blindness. In fact, untreated glaucoma is one of the most common causes of blindness.

LUMIGAN® PF eye drops lower the pressure in the eye by helping the flow of fluid out of the eye chamber.

LUMIGAN® PF eye drops can be used alone or together with other eye drops/medicines to lower raised pressure within your eyes.

Although LUMIGAN® PF eye drops help control your condition, they will not cure it. LUMIGAN® PF eye drops are only available with a doctor's prescription from pharmacies. Your doctor may have prescribed LUMIGAN® PF eye drops for another reason. Ask your doctor if you have any questions about why LUMIGAN® PF eye drops have been prescribed for you.

For more information about glaucoma, contact Glaucoma Australia Inc (telephone 1800 500 880) or Glaucoma New Zealand on (09 373 8779).

Before you use LUMIGAN® PF eye drops

When you must not use it

Do not use LUMIGAN® PF eye drops if:

- you have an allergy to bimatoprost or any of the ingredients listed at the end of this leaflet.
- the product does not look quite right such as discoloured.
- the packaging shows any signs of tampering.
- the expiry date on the ampoule has passed.

If you use this medicine after the expiry date has passed, it may not work effectively.

It is not known if LUMIGAN® PF eye drops are safe and useful for children and adolescents under 18 years and therefore its use is not recommended.

These drops are for topical use only.

Before you start to use it

Tell your doctor if:

1. You have had an allergy to any medicines or any other substances, such as foods, preservatives or dyes.
2. You have breathing problems.
3. You have liver or kidney problems.
4. You have low blood pressure or low heart rate
5. You have a disease causing swelling of the back of the eye.
6. You have an inflammatory eye condition.

7. You are pregnant or intend to become pregnant.

Like most medicines, LUMIGAN® PF eye drops should not be used during pregnancy, unless clearly necessary.

8. You are breast-feeding or intend to breast-feed.

Before you start using LUMIGAN® PF eye drops your doctor should tell you that some changes to your eyes may occur which may be permanent.

During treatment, LUMIGAN® PF may cause a loss of fat around the eye, which may cause your eyelid crease to deepen, your eye to appear sunken, your upper eyelid to droop, the skin around your eye to tighten and the lower white part of your eye to become more visible. The changes are typically mild, but if pronounced, they can affect your field of vision. The changes may disappear if you stop taking LUMIGAN® PF.

Eyelashes may also grow longer and thicker, and eyelashes, the skin around the eye and the coloured part of the eye may become darker. If only one eye is being treated the cosmetic differences between the eyes may be noticeable. None of these changes affect vision. If you have any concerns, ask your doctor or pharmacist.

Taking other medicines

Tell your doctor if you are taking any other medicines, including any that you buy without a prescription from your pharmacy, supermarket or health food shop.

It is not expected that LUMIGAN® PF will interact with other medicines, however you should always ask your optical practitioner, doctor or pharmacist if you have any concerns about using LUMIGAN® PF eye drops as well as other medications.

How to use LUMIGAN® PF eye drops

How much to use

Your doctor will tell you how many drops you need to use each day. Use LUMIGAN® PF eye drops only as prescribed by your doctor.

The usual dose of LUMIGAN® PF eye drops is one drop in the affected eye(s) once daily, given in the evening.

Follow all directions given to you by your doctor carefully. The directions may differ from the information contained in this leaflet.

Use LUMIGAN® PF eye drops every day, at about the same time each day, unless your doctor tells you otherwise. Using your eye drops at the same time each day will have the best effect on your eye pressure. It will also help you remember when to use the eye drops.

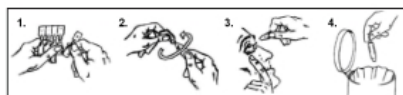
If you are using more than one eye drop product, wait 5 minutes before using the second product.

If you are being changed from one eye drop to another, follow your doctor's instructions carefully as to when to stop the old drops and when to start the new drops.

How to use it

You may find it easier to put drops in your eye while you are sitting or lying down.

Wash your hands well with soap and water. Make sure that the ampoule is intact before use.



1. Tear 1 ampoule from the strip.
2. Hold the ampoule upright (with the cap pointing upwards) and twist off the cap.
3. Gently pull down the lower eyelid to form a pocket. Turn the ampoule upside down and

squeeze it to release 1 drop into the affected eye(s).

While your eye is closed, place your index finger against the inside corner of your eye and press against your nose for about two minutes. This will help to stop the medicine from draining through the tear duct to the nose and throat, from where it can be absorbed into other parts of your body. Ask your doctor for more specific instructions on this technique.

4. Throw away the ampoule after you have used it, even if there is some solution left.
5. Wash your hands again with soap and water to remove any residue.

The solution should be used immediately after opening.

How long to use it

LUMIGAN® PF eye drops help control your condition, but do not cure it. Therefore, LUMIGAN® PF eye drops must be used every day. Continue using LUMIGAN® PF eye drops for as long as your doctor prescribes.

If you forget to use it

If it is almost time for your next dose, skip the dose you missed and use your next dose when you are meant to. Otherwise, use the drops as soon as you remember, and then go back to using them as you would normally.

If you are not sure whether to skip the dose, talk to your doctor or pharmacist.

Do not use double the amount to make up for the dose that you missed.

If you use too much (overdose)

If you accidentally put several drops in your eye(s), immediately rinse your eye(s) with warm water.

If you think that you or anyone else may have swallowed any or all of the contents of an ampoule or ampoules of LUMIGAN® PF eye drops, immediately telephone your doctor or **Poisons Information Centre (Australia: telephone 13 11 26; New Zealand: telephone 0800 POISON or 0800 764 766)** for advice, or go to casualty at your nearest hospital. Do this even if there are no signs of discomfort or poisoning.

While you are using LUMIGAN® PF eye drops

Things you must do

Have your eye pressure checked when your eye specialist says, to make sure LUMIGAN® PF eye drops are working.

If you develop an eye infection, receive an eye injury, or have eye surgery tell your doctor.

If you become pregnant while using LUMIGAN® PF eye drops tell your doctor immediately.

Tell your doctor if your condition gets worse or does not get better while using LUMIGAN® PF eye drops.

If you are about to start any new medicine tell your doctor and pharmacist that you are using LUMIGAN® PF eye drops.

Things you must not do

Do not give LUMIGAN® PF eye drops to anyone else, even if they have the same condition as you.

Do not stop using LUMIGAN® PF eye drops without first talking to your doctor. If you stop using your eye drops, your eye pressure may rise again and damage to your eye may occur.

Things to be careful of

Your vision may blur for a short time after you put in your LUMIGAN® PF eye drops. If this happens you should wait until you can see well again before you drive or use machinery.

LUMIGAN® PF eye drops are not expected to cause any problems with your ability to drive a car or operate machinery. However, as a general precaution be careful driving or operating machinery until you know how LUMIGAN® PF eye drops affect you.

Side effects

Tell your optical practitioner, doctor or pharmacist as soon as possible if you do not feel well while you are using LUMIGAN® PF eye drops.

Check with your doctor as soon as possible if you have any problems while taking LUMIGAN® PF eye drops, even if you do not think the problems are connected with the medicine or are not listed in this leaflet.

Ask your optical practitioner, doctor or pharmacist any questions you may have.

Tell your doctor if you notice any of the following and they worry you:

- red, congested eyes
- itching of eye/s
- small lesions or erosions on the eye surface
- feeling of something in the eye
- dryness of the eye
- growth of eyelashes
- pain in the eye
- irritation of the eye
- inflamed/red eyelid/s
- darkening of skin around eye.

More often the following effects have been seen:

- loss of fat in the eye region which can lead to deepening of your eyelid crease, sunken eye,

drooping eyelid, tightening of the skin around your eye, and the lower white part of your eye to become more visible.

Less often the following effects have been seen:
discharge from the eye, eye discomfort, inflamed areas around the eye/s, swelling of the conjunctiva, discharge from the eye, eyelash darkening, eyelid itchiness and redness, darkening of the coloured part of the eye, burning of the eye and nearby eyelid, sensitivity to light, tears, changes in/disturbance of vision.

Rarely other eye related problems can occur such as spasm of the eye where there is uncontrolled blinking, eyelid retraction, inflammation of the coloured part of eye, bleeding in eye chamber, redness and inflammation on the eye and surrounding eye area, eyelid swelling, swelling of the back of the eye.

There can also be effects on the body as a whole such as nausea, weakness, infection, headache and very rarely depression, sensation of spinning in stable surroundings, dizziness, hypersensitivity, excessive growth of hair, abnormal hair growth, asthma, exacerbation of asthma, shortness of breath and high blood pressure.

After using LUMIGAN® PF eye drops

Storage

Keep your LUMIGAN® PF eye drops in a cool place where the temperature stays below 25°C. For the 30 x 0.4 mL pack once the pouch is opened, the ampoules should be used within 30 days.

Keep the medicine where children cannot reach it.

Disposal

If your doctor tells you to stop using the eye drops or they have passed their expiry date, ask your pharmacist what to do with any remaining ampoules.

Product description

What LUMIGAN® PF eye drops look like:

Clear, colourless, sterile solution in a single use ampoule.

Ingredients

Active ingredient:

Bimatoprost 300 micrograms/mL

Inactive ingredients:

Dibasic sodium phosphate
heptahydrate

Sodium chloride

Citric acid monohydrate

Sodium hydroxide and/or
hydrochloric acid may be added to
adjust pH

Purified water

Manufacturer/Supplier

AbbVie Pty Ltd

241 O'Riordan Street

Mascot NSW 2020

AUSTRALIA

Ph: 1800 043 460

AbbVie Limited

6th Floor, 156-158 Victoria St

Wellington, 6011

NEW ZEALAND

PH: 0800 900 030

LUMIGAN® PF eye drops can be
identified by registration number:
AUST R 199469

Date of preparation:

May 2023

© 2023 AbbVie. All rights

reserved. LUMIGAN and its design
are trademarks of Allergan, Inc., an
AbbVie company.